



**BUMA  
SQUARE**  
BUSINESS PARK

Versatile  
office complex  
in Krakow.



# Excellent location and versatile office space

---

**BUMA  
SQUARE**  
BUSINESS PARK



# The Concept

**28 600 sqm** Gross Leasable Area  
**750-2 400 sqm** Typical floor net size  
**7 100 sqm** Ground floor

**9** Buildings  
**550** Parking spaces  
**3%** Common area ratio

**DDJM** Design by  
**2005** Completion/Opening

# Buma Square Office Complex



## Developing City District

Located in one of the fastest growing business areas in Krakow



## Office Hub

Several modern offices established



## Amenities

In-house and in the largest shopping center located in close proximity



## Public transport

Excellent public transport links



## Wellness

In-house fitness club, swimming pool, and jacuzzi

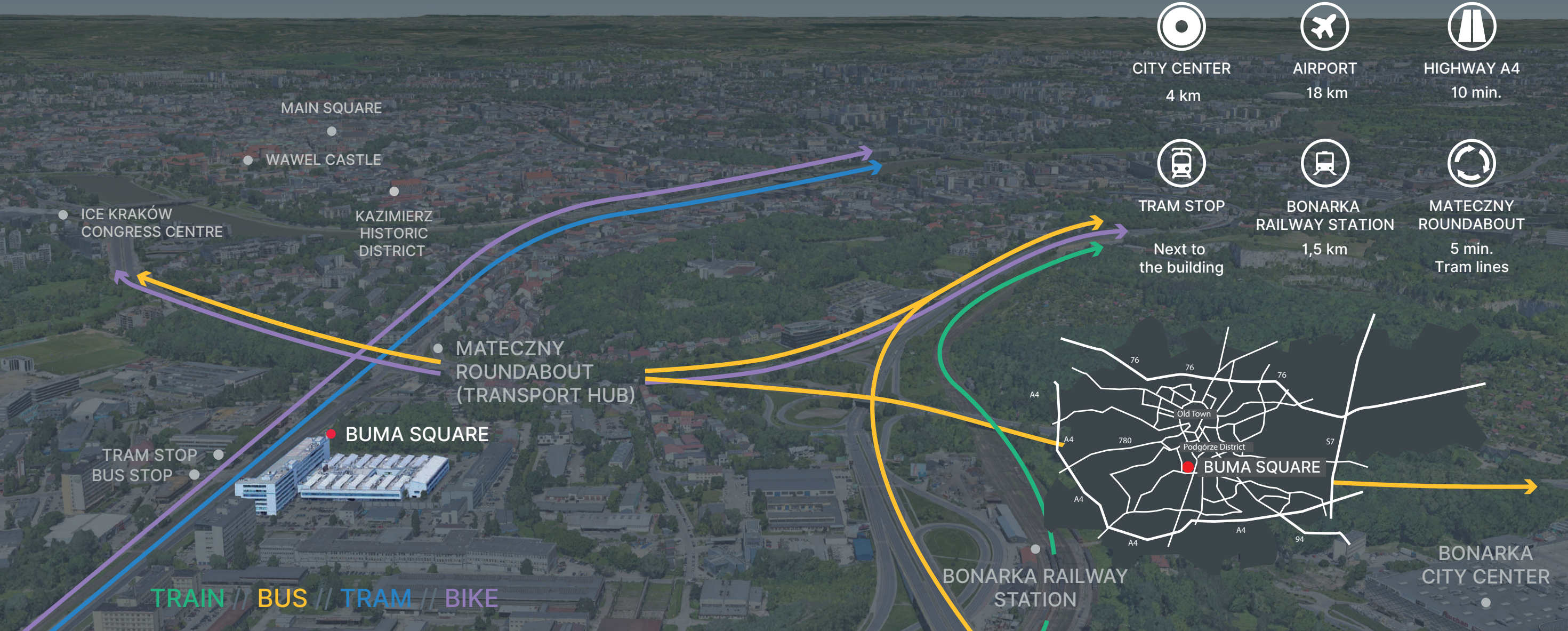


## Health

Medical facility in the complex



# Excellent location



# Floor plan – Ground Floor

Total net area: 7 100 sqm



# Floor plan – Ground Floor

Rehabilitation equipment shop

+ 61 sqm

Pharmacy

+ 110 sqm

Grocery store

+ 81 sqm

Computer shop

+ 260 sqm

+ 73 sqm

Post office

+ 57 sqm

Insurance company

+ 63 sqm

Cosmetic shop

+ 23 sqm

Stationery shop

+ 23 sqm

Courier company

+ 20 sqm

Fitness center

+ 1 990 sqm

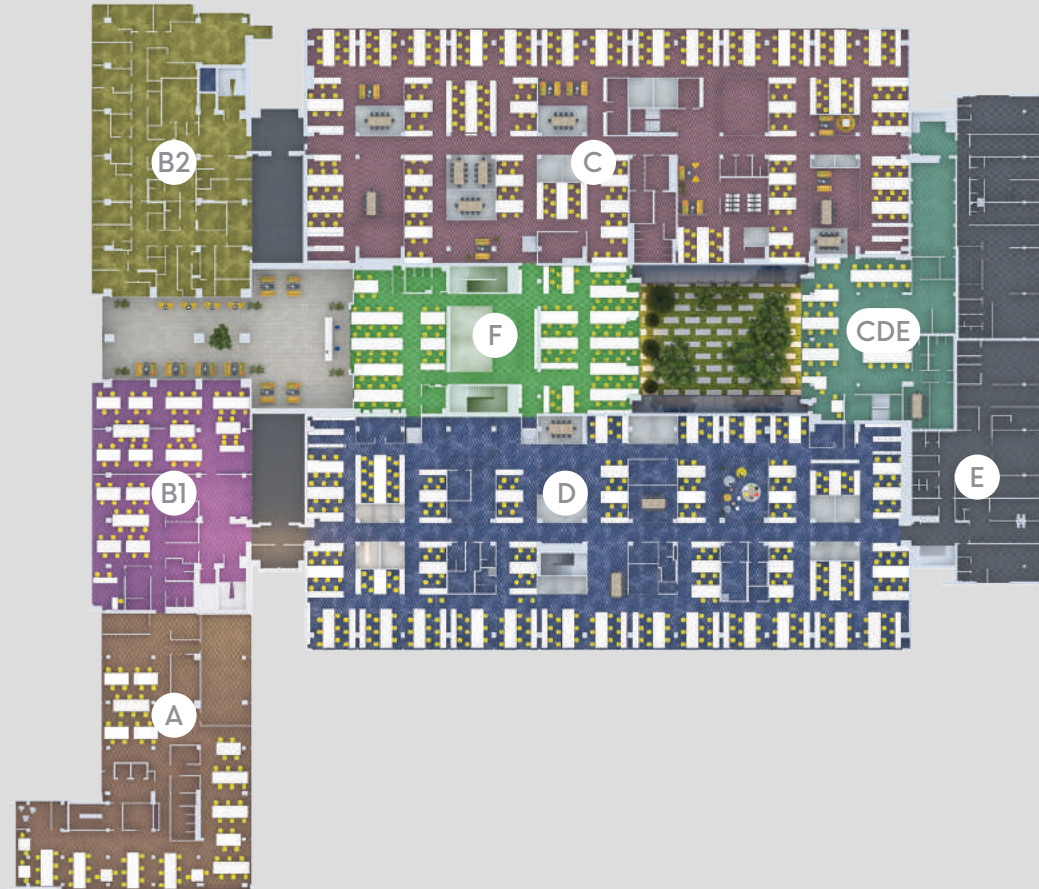
Kindergarten

+ 230 sqm

Offices

# Floor plan – First floor in the complex

Typical Floor: up to 2 400 sqm net office area • Ideal seating density: min. 8 sqm/person • Potential Seating Plan



# Floor plan – First floor in the complex

Typical Floor: up to 2 400 sqm net office area • Ideal seating density: min. 8 sqm/person • Potential Seating Plan

<p><b>Building B2</b></p> <p><b>B2</b> approx. 85 people 680 sqm net office area</p>	<p><b>Building F</b></p> <p><b>F</b> approx. 83 people 670 sqm net office area</p>
<p><b>Building B1</b></p> <p><b>B1</b> approx. 78 people 630 sqm net office area</p>	<p><b>Building D</b></p> <p><b>D</b> approx. 300 people 2 400 sqm net office area</p>
<p><b>Building A</b></p> <p><b>A</b> approx. 93 people 750 sqm net office area</p>	<p><b>Building CDE</b></p> <p><b>CDE</b> approx. 67 people 540 sqm net office area</p>
<p><b>Building C</b></p> <p><b>C</b> approx. 300 people 2 400 sqm net office area</p>	<p><b>Building E</b></p> <p><b>E</b> approx. 103 people 830 sqm net office area</p>

# Cross section

## Building

Clear height of  
office levels: 300 to 700 cm  
Ground floor + 6 floors

**28 600 sqm**

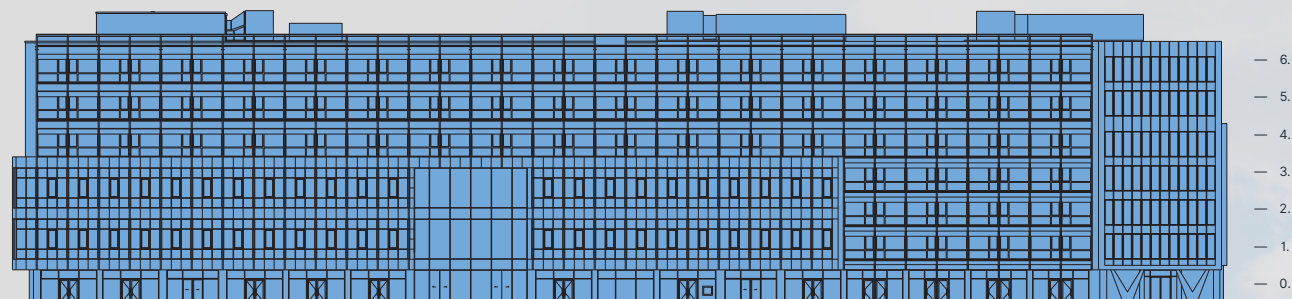
Gross Leasable Area

**750–2 400 sqm**

Typical floor net size

**7 100 sqm**

Ground floor net size



# High service standard for the convenience of tenants and guests

- + Multi-purpose atrium
- + One spacious lobby with a central corridor
- + Food court with four lunch bars
- + Indoor swimming pool, sauna, and jacuzzi
- + Fitness club
- + Additional toilets for disabled people
- + Toilets in the central hallways
- + Kindergarten with a children's play area
- + 24-hour security and CCTV
- + Access control

# Technical Specification

← Suspended ceiling

Automatic Fire Detection  
and Evacuation System

↑ Climate control

← Clear height: 300 cm to 700 cm

- + Built-to-suit opportunity to provide the ideal workplace conditions
- + Double electricity feed
- + Secure evacuation

Buma Square provides integrated services, amenities, and serves community needs



## Amenities



Restaurants



Banks



Post office



Supermarket



Fitness center



Kindergarten




# Created for the future



Excellent public transport links – tram and bus stops right next to the building and Mateczny Roundabout nearby (one of the biggest transport hubs in Krakow)

Located in one of the fastest growing business areas in Krakow and in close proximity to the largest shopping center

# Contact us

 [www.bumasquare.com](http://www.bumasquare.com)

 +48 604 227 846

 [pk@revetas.com](mailto:pk@revetas.com)

 Krakow, Poland

The information contained in this promotional material is for illustration purposes only and is subject to change



